



Lower Charles River Chart

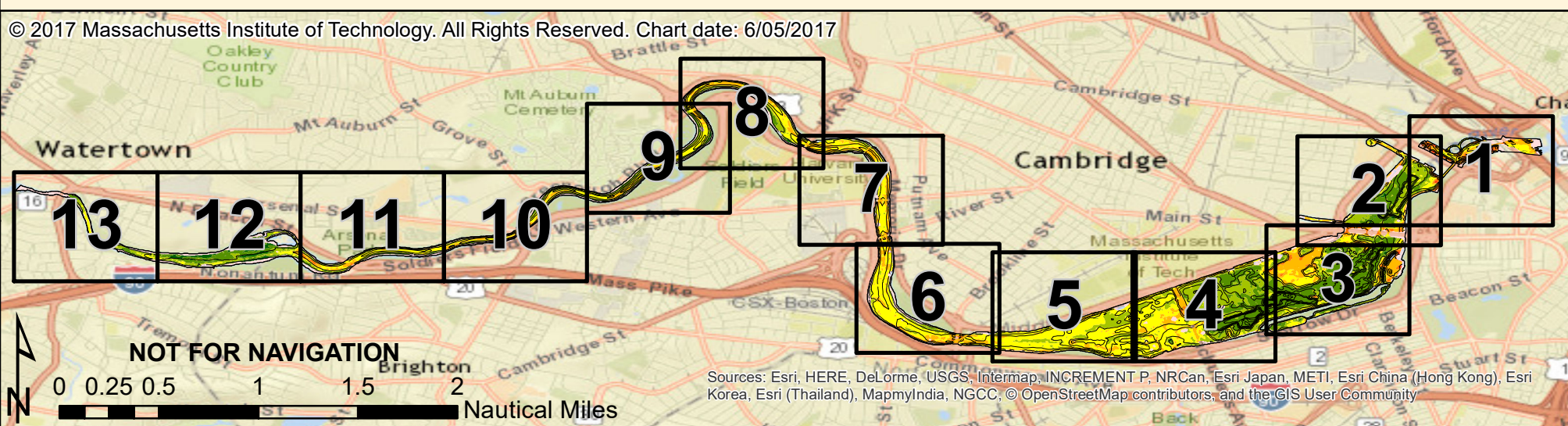
CRAB and MIT Sea Grant Chart Project



Legend

Shorelines		Hardness		Soft
Major Contours				
Uncharted Areas				
				Hard

© 2017 Massachusetts Institute of Technology. All Rights Reserved. Chart date: 6/05/2017



Notice

This chart is intended to be used as an aid to recreational boaters, but should not be relied upon for navigational purposes because of the limitations on scale and ever-shifting depths of the river. The use of this chart is at the user's sole risk. The user agrees that neither CRAB nor MIT shall be responsible for any injuries or property damage that a user or others suffer or cause from the use of this chart or any Data related to the Project. The user shall indemnify and hold CRAB and MIT harmless from any claims arising from its use.

Acknowledgements

Generous in-kind support was provided by:

MIT Sea Grant College Program
MIT Sailing Center
Massachusetts Bays National Estuary Program (EPA Grant CE96173901)

Initial project funding was provided by:

Boston Duck Tours	Head of the Charles Regatta
Newton Yacht Club	Riverside Boat Club
Union Boat Club	Community Rowing
Community Boating	

Further financial support was provided by:

Northeastern University Rowing	Watertown Yacht Club
Charles River Conservancy	Generous individuals

Financial contributions to support this project can be made at www.CharlesRiverAllianceofBoaters.org/chart.html.

Special thanks to survey volunteers Katrina Alleyne, Hugh Dougherty, Skipper Bill Gallagher, Skipper Mark Landsberg, Paul Robinette, Cam Sacarny, and Juliet Simpson

MIT Sea Grant publication number 17-01

© 2017 Massachusetts Institute of Technology. All Rights Reserved.

Introduction to the Chart Project

Sediment deposition continues to be a problem in the Charles River. In recent years, buildup of sediments has caused several incidents that resulted in property damage and personal injury. While sediment buildup appears to be a larger problem where major tributaries empty into the Charles, such as Laundry Brook, Hyde Brook, Faneuil Brook, Muddy River, and Stony Brook, once the sediment is in the river it can spread to other areas. There have also been extraordinary events, such as water main breaks in Weston in May, 2010 and near the Anderson Bridge in August, 2015, both of which moved large amounts of sediment. This problem is not limited to the areas upstream of the Boston University (BU) Bridge. A significant bar upriver of the Massachusetts Avenue Bridge is shallow enough and large enough to be a navigational hazard to both sailboats and motorboats.

It has been difficult to marshal the resources to remediate areas impacted by increasing sedimentation since much of the knowledge about the shallows and bars has come from the daily experiences of the boaters on the river but not supported by quantitative data. To address this issue, the Charles River Alliance of Boaters (CRAB) developed a partnership with the [MIT Sea Grant College Program](#) to create a chart of the river depth between the Charles River Dam and the Watertown Dam, and to monitor changes in the river bottom in the future. Based upon some feasibility studies done in late 2015, more detailed and extensive measurements were undertaken in 2016.

The initial scope of the project is described below:

1. **Depth Measurement**

The project team used a Lowrance HDS-7 chartplotter/fishfinder with Point-1 GPS, HST-WSBL broadband, and LSS-2 sidescan sonar transducers for depth measurements. In areas of the river that are wide, survey lines were spaced between 30 and 65 feet apart and driven at speeds generally between 3 and 4.8 knots. Where the river is narrow, several passes were made up and down the river over multiple weeks. Broadband sonar was used during the entire survey, resulting in recordings of both depth and relative hardness of the river bottom, as well as time and position of each sonar reading. In addition, sidescan sonar was used downriver of the BU Bridge to capture images of the river bottom and objects of interest.

2. **Influence of Daily Water Releases**

As part of flood control measures, water from the river is released from the Charles River Dam into Boston Harbor at low tide and held in the river at high tide. This causes the water level in the river to change several inches over the course of a day. A USGS [gauge](#) at the First Street Bridge in Cambridge records this variation in the height of the watersheet. While this gauge is

a good measure of the river level downstream of the BU Bridge, there were no gauges between this location and the Watertown Dam.

In order to better understand the variation in watersheet over the entire survey area, the project team installed Crain 4 ft. stream gauges and Onset HOBO Model #U20L-04 Water Level Data Loggers at Riverside Boat Club, Herter Park, and Community Rowing facilities. These additional gauges provided insight into how the height of the watersheet varies along the length of the river. During the 2016 summer, the gauges indicate that the river acted as a lake, with the height of the watersheet varying uniformly along its gauged length within .1 ft. If there had been more rainfall or more substantial dam releases, it was expected that the height of the watersheet would have varied along the length of the river. We plan to keep the additional gauges installed for a few years and to monitor how the height of the watersheet changes during periods of significant rainfall.

In order to more accurately determine the depth of the river, all raw depth measurements have been adjusted to account for the variation in the height of the watersheet, and referenced to a First Street Bridge gauge height of 107.5 ft.



Sacarny and Yoder on Charles during survey. Note GPS visible above transom.

3. Development of Digital Charts

The raw sonar data gathered in the field was first processed using ReefMaster PRO mapping software. This generated two-dimensional contours of both depth and relative hardness that were then exported as ESRI shapefiles. ReefMaster was also used to construct sidescan sonar mosaics of the river bottom. ArcGIS ArcMap was used to organize additional geospatial data, including landmarks, elevated structures, detailed shorelines, and contour annotation into completed charts.

The web version of the chart is the product of a simplified workflow combining the best of ArcGIS and open-source web mapping frameworks. The refined, multi-layer map package developed in ArcMap is uploaded to ArcGIS Online, where the individual layers are made available as Web Map Services (WMSs). WMSs is then used to import the ArcGIS Online layers into a mobile-friendly, highly-customizable web environment coded in Leaflet and CartoDB javascript frameworks.

To enable public to access this data, the following formats have been developed:

- Chart Booklet: A printable PDF file that includes an overview of the river from Watertown to Charles River Dam, and more detailed charts of each section of the river. There are variants of the booklet for water depth and river bottom hardness.
- Large Format Overview: Intended for poster-sized printout, it presents a view of the entire river from Watertown to the Charles River Dam, showing river bottom depths and contours. This format is suitable to be displayed on the wall of every boathouse.
- Google Earth and Google Map: Online versions of the depth and relative hardness data using both Google Earth and Google Maps.
- Online GIS: Additional representations of the river data are openly available on the Sea Grant website at <http://seagrant.mit.edu/charleschart/>.

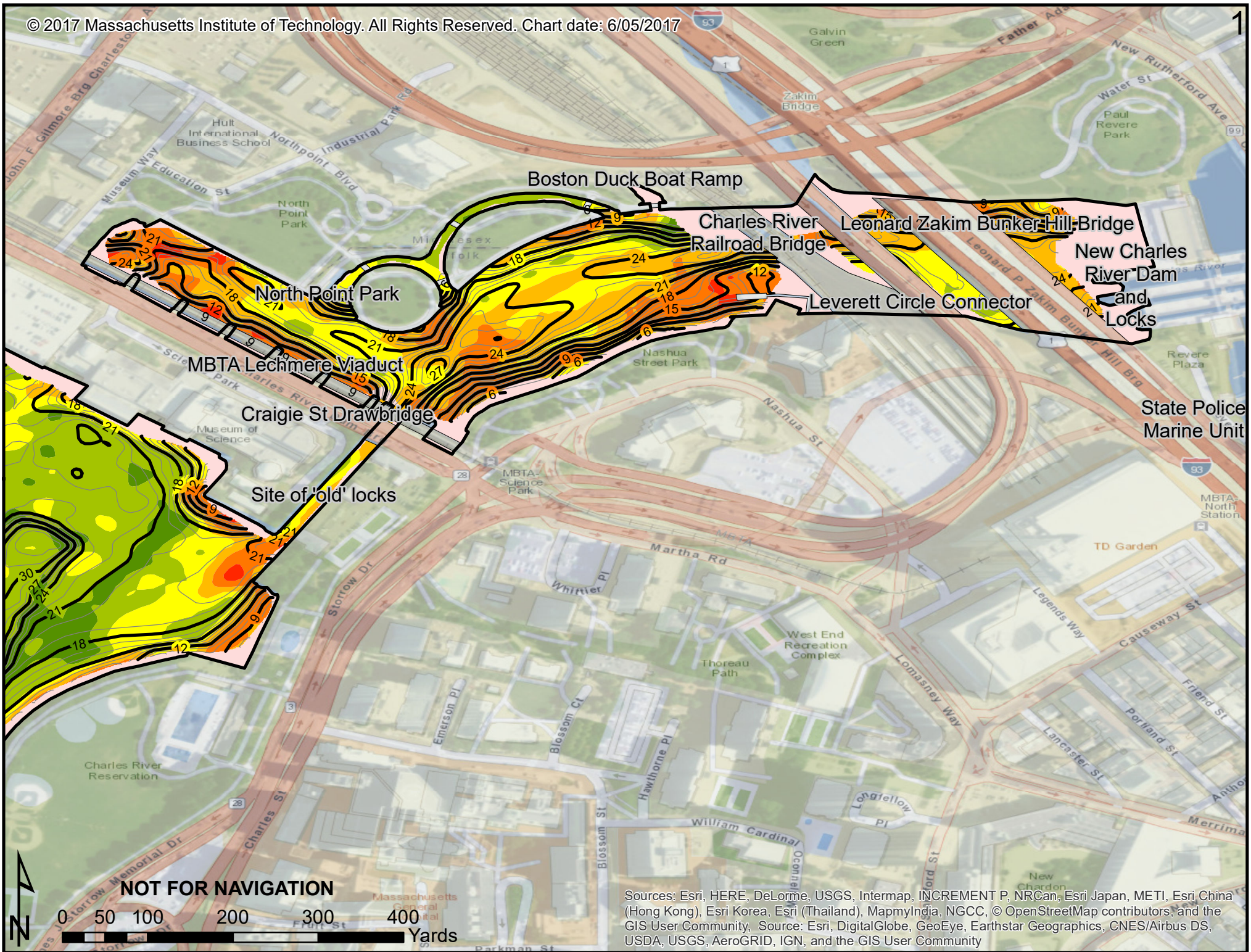
Statement of Accuracy

Vertical Uncertainty: This chart represents depths as determined by fishfinder sonar and is based on echo from the top layers of sediments. Given these readings, transducer uncertainty, and related factors, the depth accuracy is stated as +/-5%. In areas of loose sediments, manual measurements could result in depths several tenths of a foot greater than those based on fishfinder sonar.

Horizontal Uncertainty: Based on specifications of the GPS used in the survey, horizontal accuracy is stated as 3m. except in areas where GPS satellite signal is degraded, such as under bridges, especially the Zakim Bridge. Uncertainty in lateral position may give rise to additional uncertainty in depth. Also, as an artifact of chart processing, depths immediately adjacent to walled sections above the BU Bridge are depicted as sloped contours rather than discrete steps.

Project Personnel

Carl Zimba	Project Coordinator, Charles River Alliance of Boaters
Michael Sacarny	Project and survey lead, MIT Sea Grant College Program
Madonna Yoder	Chart developer and survey crew, MIT Sea Grant College Program
Ben Bray	Website development, MIT Sea Grant College Program



NOT FOR NAVIGATION

0 50 100 200 300 400 Yards

Sources: Esri, HERE, DeLorme, USGS, Intermap, INCREMENT P, NRCan, Esri Japan, METI, Esri China (Hong Kong), Esri Korea, Esri (Thailand), MapmyIndia, NGCC, © OpenStreetMap contributors, and the GIS User Community, Source: Esri, DigitalGlobe, GeoEye, Earthstar Geographics, CNES/Airbus DS, USDA, USGS, AeroGRID, IGN, and the GIS User Community



Charles Riverboat Cruises

Cambridgeside Galleria Mall

Charlesgate Yacht Club

Mooring field

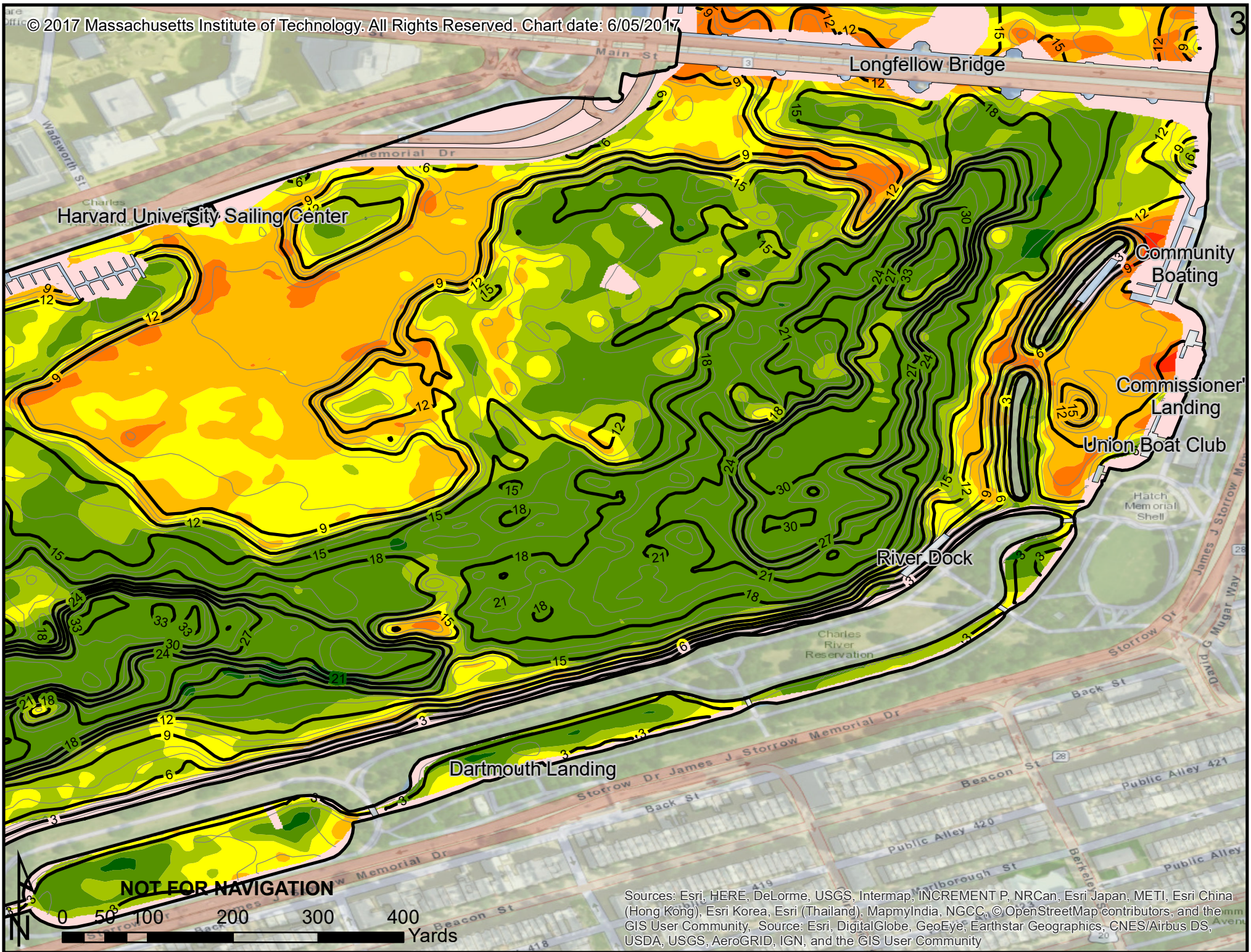
Longfellow Bridge

Charles River Canoe & Kayak Cambridge

NOT FOR NAVIGATION



Sources: Esri, HERE, DeLorme, USGS, Intermap, INCREMENT P, NRCan, Esri Japan, METI, Esri China (Hong Kong), Esri Korea, Esri (Thailand), MapmyIndia, NGCC, © OpenStreetMap contributors, and the GIS User Community. Source: Esri, DigitalGlobe, GeoEye, Earthstar Geographics, CNES/Airbus DS, USDA, USGS, AeroGRID, IGN, and the GIS User Community



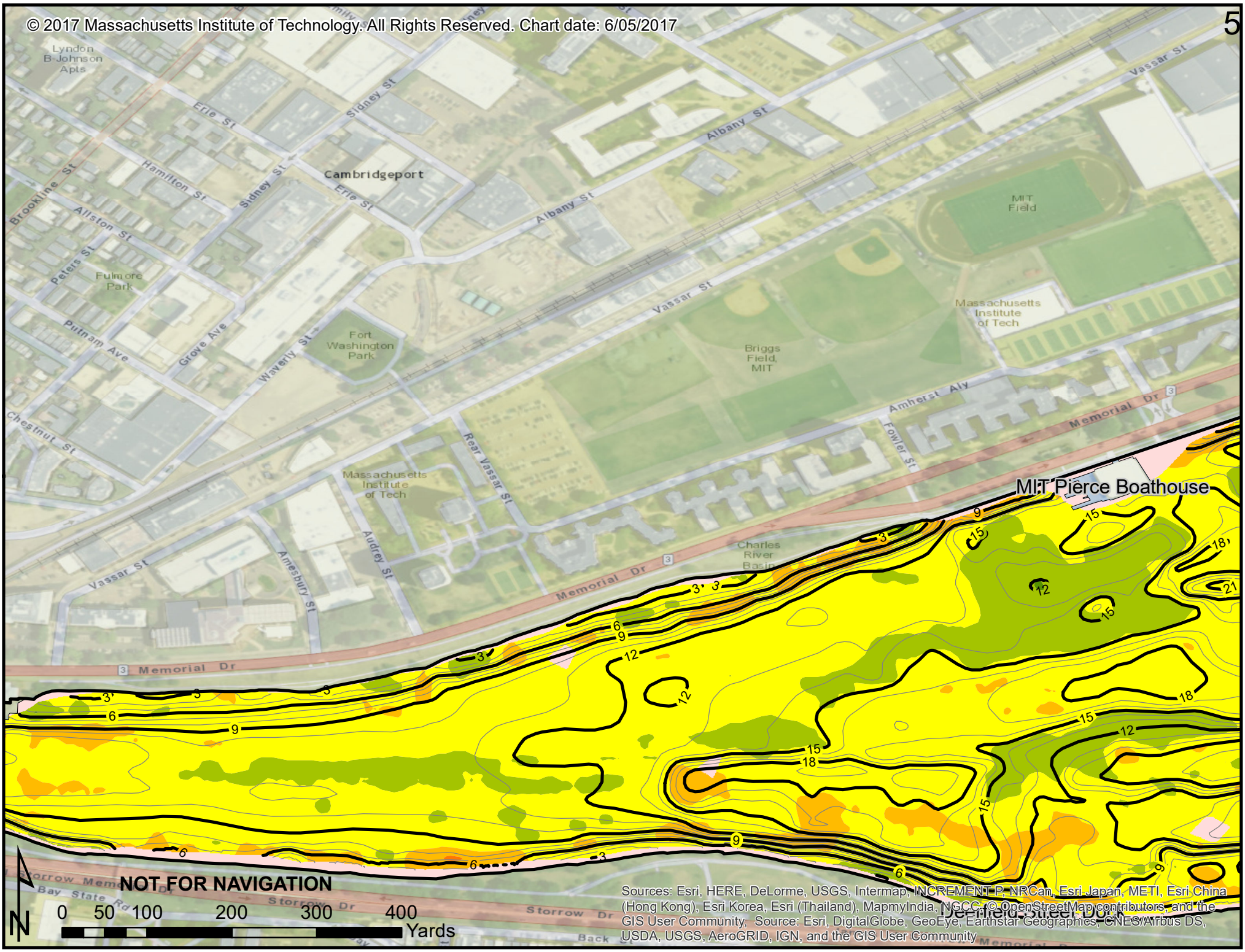
NOT FOR NAVIGATION

0 50 100 200 300 400
Yards

Sources: Esri, HERE, DeLorme, USGS, Intermap, INCREMENT P, NRCan, Esri Japan, METI, Esri China (Hong Kong), Esri Korea, Esri (Thailand), MapmyIndia, NGCC, © OpenStreetMap contributors, and the GIS User Community, Source: Esri, DigitalGlobe, GeoEye, Earthstar Geographics, CNES/Airbus DS, USDA, USGS, AeroGRID, IGN, and the GIS User Community



Sources: Esri, HERE, DeLorme, USGS, Intermap, INCREMENT P, NRCan, Esri Japan, METI, Esri China (Hong Kong), Esri Korea, Esri (Thailand), MapmyIndia, NGCC, © OpenStreetMap contributors, and the GIS User Community. Source: Esri, DigitalGlobe, GeoEye, Earthstar Geographics, CNES/Airbus DS, USDA, USGS, AeroGRID, IGN, and the GIS User Community



Sources: Esri, HERE, DeLorme, USGS, Intermap, INCREMENT P, NRCan, Esri Japan, METI, Esri China (Hong Kong), Esri Korea, Esri (Thailand), MapmyIndia, NGCC, OpenStreetMap contributors, and the GIS User Community. Source: Esri, DigitalGlobe, GeoEye, Earthstar Geographics, CNES/Airbus DS, USDA, USGS, AeroGRID, IGN, and the GIS User Community



NOT FOR NAVIGATION

0 50 100 200 300 400 Yards

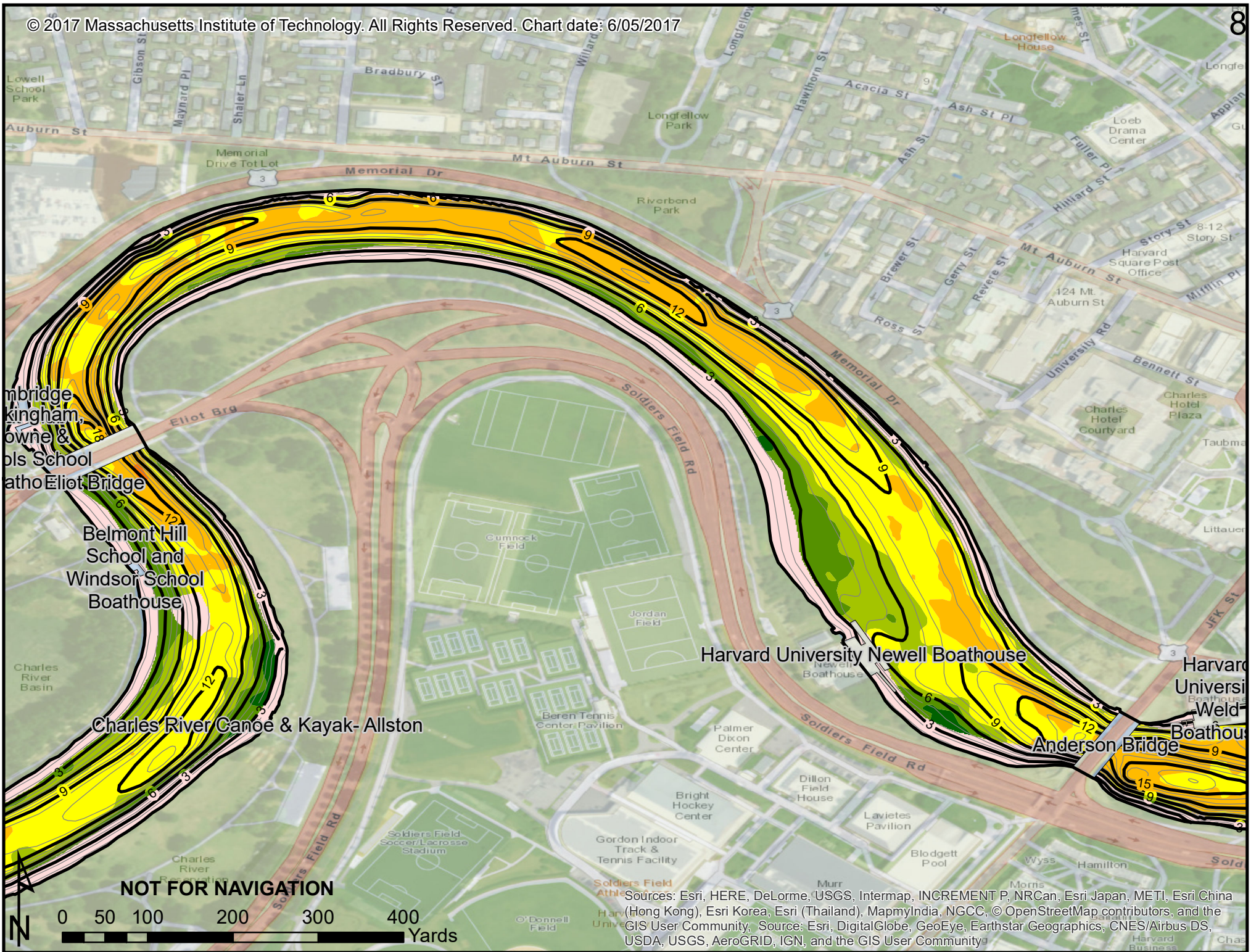
Sources: Esri, HERE, DeLorme, USGS, Intermap, INCREMENT P, NRCan, Esri Japan, METI, Esri China (Hong Kong), Esri Korea, Esri (Thailand), MapmyIndia, NGCC, © OpenStreetMap contributors, and the GIS User Community, Source: Esri, DigitalGlobe, GeoEye, Earthstar Geographics, CNES/Airbus DS, USDA, USGS, AeroGRID, IGN, and the GIS User Community



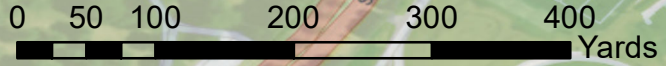
NOT FOR NAVIGATION

0 50 100 200 300 400 Yards

Sources: Esri, HERE, DeLorme, USGS, Intermap, INCREMENT P, NRCan, Esri Japan, METI, Esri China (Hong Kong), Esri Korea, Esri (Thailand), MapmyIndia, NGCC, © OpenStreetMap contributors, and the GIS User Community. Source: Esri, DigitalGlobe, GeoEye, Earthstar Geographics, CNES/Airbus DS, USDA, USGS, AeroGRID, IGN, and the GIS User Community



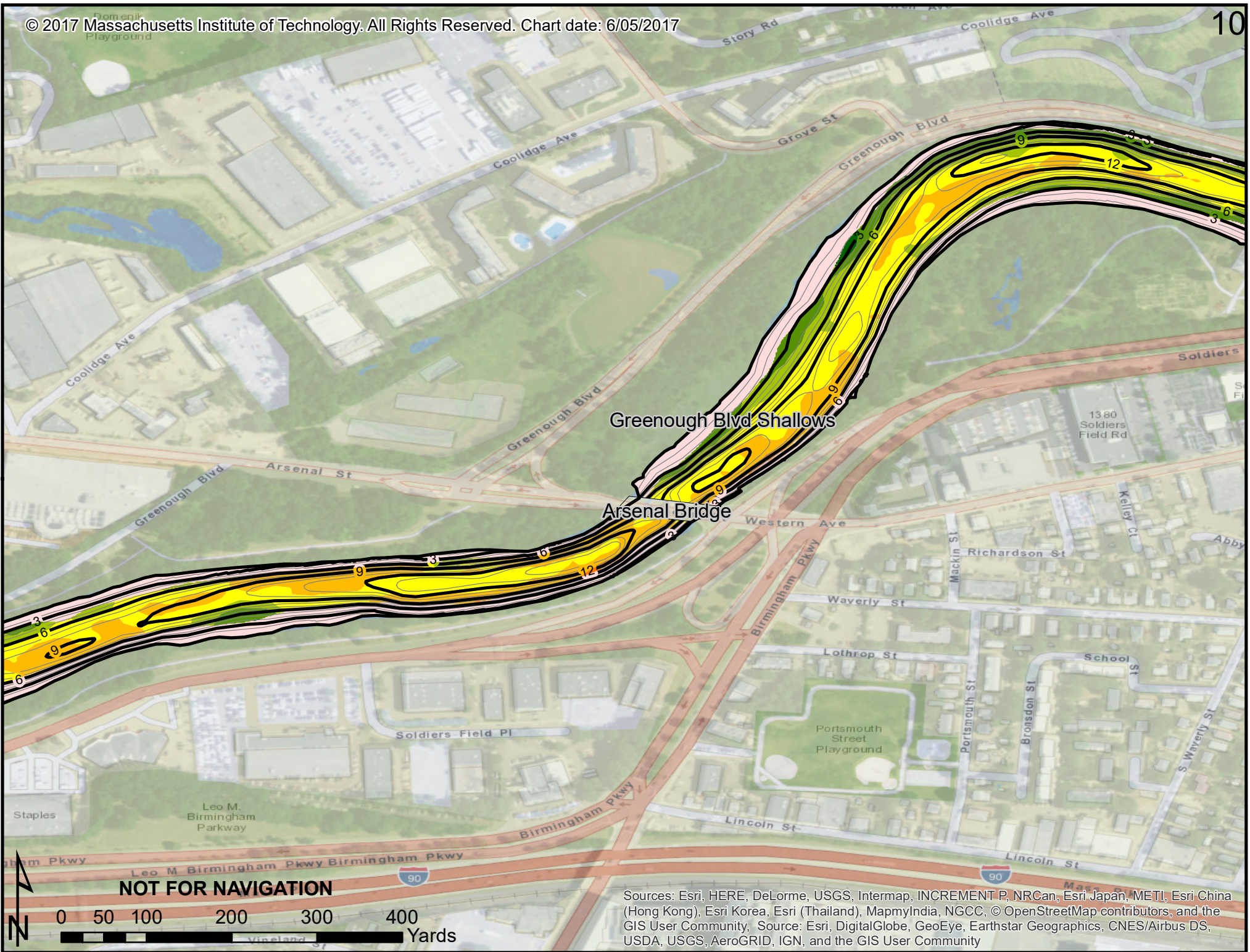
NOT FOR NAVIGATION



Sources: Esri, HERE, DeLorme, USGS, Intermap, INCREMENT P, NRCan, Esri Japan, METI, Esri China (Hong Kong), Esri Korea, Esri (Thailand), MapmyIndia, NGCC, © OpenStreetMap contributors, and the GIS User Community, Source: Esri, DigitalGlobe, GeoEye, Earthstar Geographics, CNES/Airbus DS, USDA, USGS, AeroGRID, IGN, and the GIS User Community



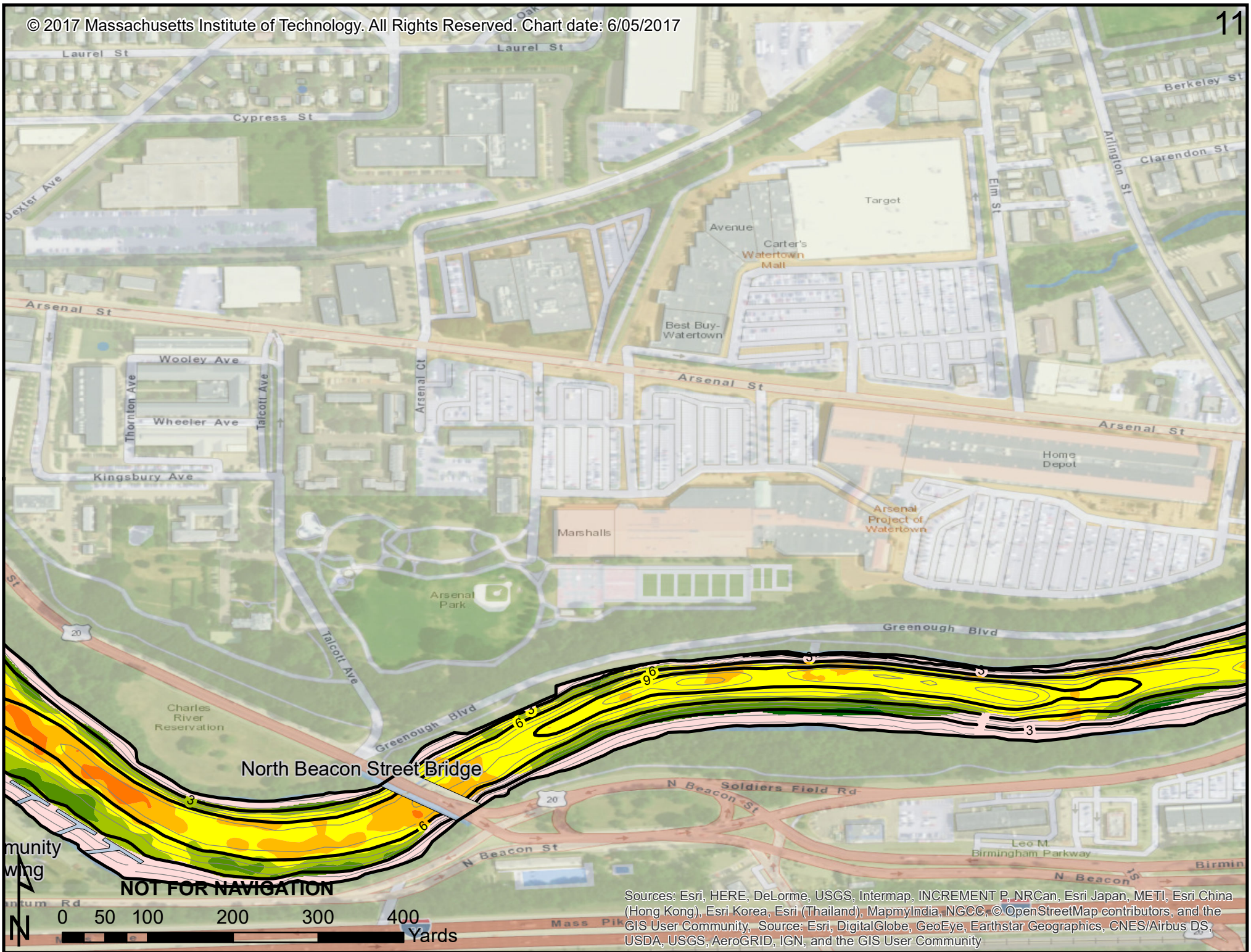
Sources: Esri, HERE, DeLorme, USGS, Intermap, INCREMENT P, NRCan, Esri Japan, METI, Esri China (Hong Kong), Esri Korea, Esri (Thailand), MapmyIndia, NGCC, © OpenStreetMap contributors, and the GIS User Community, Source: Esri, DigitalGlobe, GeoEye, Earthstar Geographics, CNES/Airbus DS, USDA, USGS, AeroGRID, IGN, and the GIS User Community



NOT FOR NAVIGATION

0 50 100 200 300 400 Yards

Sources: Esri, HERE, DeLorme, USGS, Intermap, INCREMENT P, NRCan, Esri Japan, METI, Esri China (Hong Kong), Esri Korea, Esri (Thailand), MapmyIndia, NGCC, © OpenStreetMap contributors, and the GIS User Community, Source: Esri, DigitalGlobe, GeoEye, Earthstar Geographics, CNES/Airbus DS, USDA, USGS, AeroGRID, IGN, and the GIS User Community



Sources: Esri, HERE, DeLorme, USGS, Intermap, INCREMENT P, NRCan, Esri Japan, METI, Esri China (Hong Kong), Esri Korea, Esri (Thailand), MapmyIndia, NGCC, © OpenStreetMap contributors, and the GIS User Community, Source: Esri, DigitalGlobe, GeoEye, Earthstar Geographics, CNES/Airbus DS, USDA, USGS, AeroGRID, IGN, and the GIS User Community



NOT FOR NAVIGATION

0 50 100 200 300 400 Yards

Sources: Esri, HERE, DeLorme, USGS, Intermap, INCREMENT P, NRCan, Esri Japan, METI, Esri China (Hong Kong), Esri Korea, Esri (Thailand), MapmyIndia, NGCC, © OpenStreetMap contributors, and the GIS User Community, Source: Esri, DigitalGlobe, GeoEye, Earthstar Geographics, CNES/Airbus DS, USDA, USGS, AeroGRID, IGN, and the GIS User Community



Sources: Esri; HERE, DeLorme, USGS; Intermap, INCREMENT P, NRCan, Esri Japan, METI, Esri China (Hong Kong), Esri Korea, Esri (Thailand), MapmyIndia, NGCC, © OpenStreetMap contributors, and the GIS User Community. Source: Esri, DigitalGlobe, GeoEye, Earthstar Geographics, CNES/Airbus DS, USDA, USGS, AeroGRID, IGN, and the GIS User Community

NOT FOR NAVIGATION

0 50 100 200 300 400 Yards